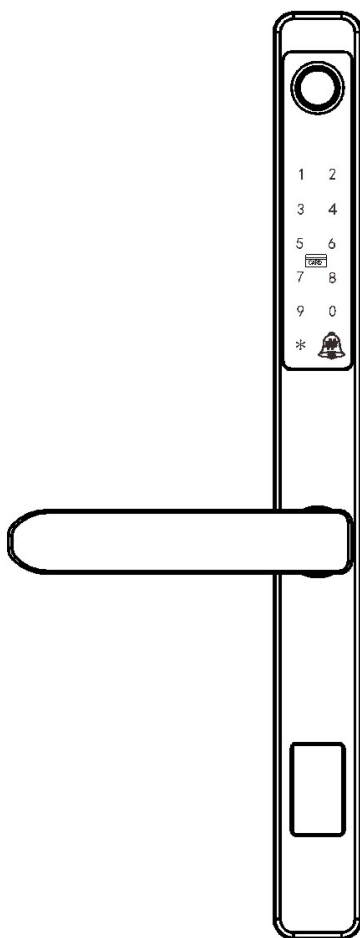


X2Broken Bridge Aluminum Lock Installation and Operation Manual

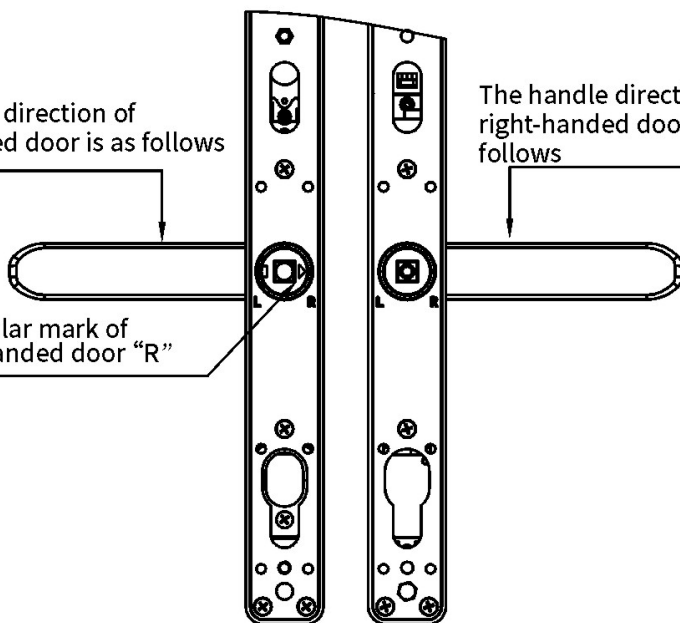


Handle direction of right-handed door:

The handle direction of right-handed door is as follows

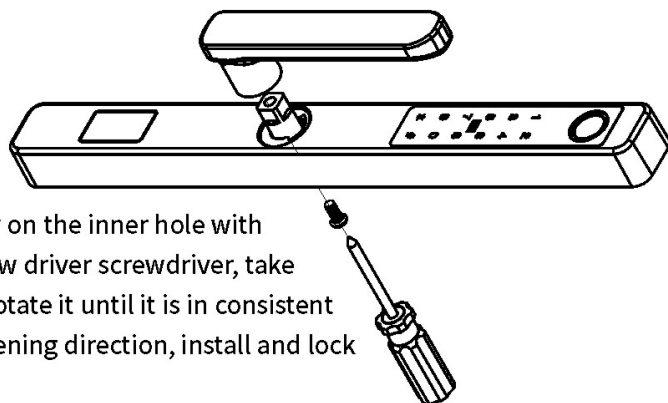
The handle direction of right-handed door is as follows

Triangular mark of right-handed door "R"



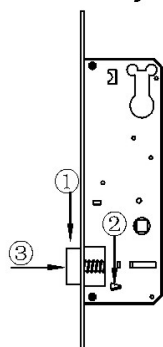
Front panel of right-handed door
Rear panel of right-handed door

Front handle direction change diagram:



Loosen the screw on the inner hole with a cross head screw driver screwdriver, take out the handle, rotate it until it is in consistent with the door opening direction, install and lock the screw.

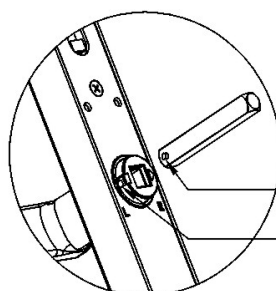
Change left and right directions for lock body



Please follow the instructions:

1. Reverse the lock body, and make the latch bolt face down
2. Let the latch bolt limit block go down
3. Press the latch bolt into the lock body by hand and rotate 180°
4. Release the latch bolt, let the latch bolt pop out along the latch bolt hole and reverse the lock body

Install front panel square shaft



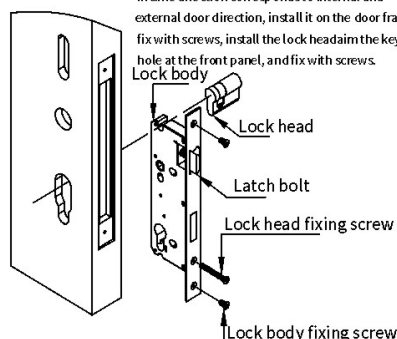
Square shaft pin

Handle hole

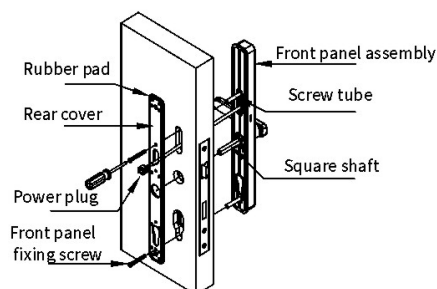
Installation method: press the square shaft pin with your finger, aim at the hole and insert it into it. The pin pops out and locked to avoid fall-off.

Install lock body

Installation method: the latch bolt is facing up in the direction corresponds to internal and external door direction, install it on the door frame fix with screws, install the lock head aim the key hole at the front panel, and fix with screws.

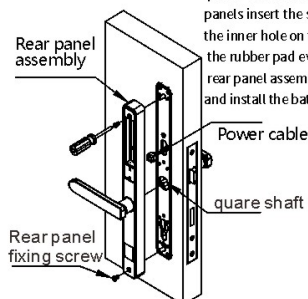


Install front panel

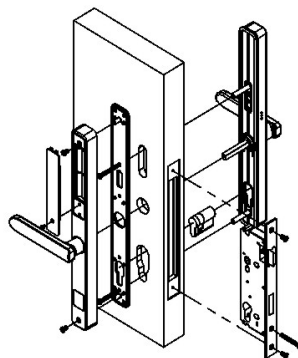


Install lock body

Installation method: connect the power cables of front and rear panels insert the square shaft into the inner hole on the handle, insert the rubber pad evenly around the rear panel assembly, fix it with screws and install the battery and battery cover



Installation exploded view



(Fingerprint + Card + Password) Door Lock User Manual

Product advantages and features

- ✍ The door can be opened by fingerprint, card and password
- ✍ Intelligent voice menu navigation, human interaction, humanized operation
- ✍ A variety of door opening modes are optional,strengthening the security level of the lock
- ✍ The adding and deleting of accounts is managed by numbers
- ✍ The adding and deleting of accounts is managed by numbers
- ✍ Have the function of preventing others from peeping password
- ✍ With electronic back lock function, after the door is back locked, only the administrator can unlock the door, common users cannot unlock the door
- ✍ Startup self-test function
- ✍ Temporary password function on Wechat Mini program
- ✍ All components adopt international famous brand products with high quality, stable and reliable.
- ✍ The door lock modules are waterproof, moisture-proof and mildew-proof
- ✍ High and low temperature, vibration and aging tests are conducted on the door lock module adapt to harsh environment.

Technical parameters

Power supply	6V (4 dry batteries)
Static current	< 60uA
User condition	<=100 sets (the first set 00 is the administrator, 01 and the other sets are users)
Number of passwords	System fingerprint/ password/ card, totally 100 sets, dynamic allocation is used
Password length	6-10 numbers
Resolution	500DPI
FRR	≤ 0.15%
FAR	≤ 0.00004%
Working temperature	- 25°C ~ 60°C
Relative humidity	20% ~ 93%

Function and operation

1.Initialization

Under initialization state, input any fingerprint, password or magnetic card to open the door; Press on the initialization key on the rear setting panel for 5S to restore it to the initial state.

2.Enter menu

2.1 Initialization state

Touch the keyboard gently to light it up, press “*#” key to set menu;

2.2 Non-initialization state

Touch the keyboard gently to light it up, press “*#” key, input the registered administrator information as prompted, set the menu.

Note: press “*” key to return to the last page; and press “#” key to exit and confirm

3. Administrator setting

3.1 Input administrator

Press “*#” to enter menu setting, follow the voice broadcast to operate:

1: You will hear: “1. Create user; 2. Delete user; 3. System setting”

--Press 1# key

2: You will hear: “operate successfully, user 00, please input password (fingerprint/ password/ card)”

--Input administrator fingerprint/ password/ card

Note: administrator only has one number 00

(you can input several fingerprints/ passwords/ cards under 00)

3.2 Delete administrator

Press on the rear setting key for 5S to restore factory setting.

4.Common user setting

4.1 Input common user

Press “*#” to enter menu setting, follow the voice broadcast to operate:

1: You will hear: “1. Create user; 2. Delete user; 3. System setting”

-- Press 1# key

2: You will hear: “operate successfully, user 0X, please input password (fingerprint/ password/ card)”

-- Input administrator fingerprint/ password/ card

“Note: number 01 and the rest numbers belong are users.

4.2 Delete common user

Press “*#” to enter menu setting, follow the voice broadcast to operate:

1: You will hear: “1. Create user; 2. Delete user; 3. System setting”

-- Press 2# key

2: You will hear: “1. Please input user number”

--input the user number to be deleted (such as 01)

3: You will hear: “operate successfully”

5. System setting

1 Time setting (for example: set 2008.08.08 20:08)

Press “*#” to enter menu setting, follow the voice broadcast to operate:

1: You will hear: “1. Create user; 2. Delete user; 3. System setting”

--Press 3# key

2: You will hear: “1. Time setting; 2. Volume adjustment; 3. Verification mode;
4. Language setting; 5. Installation setting”.

3: You will hear: “please input YYMMDD”

--Input “08 08 08” (the first two digits of a year start with 20XX by default)

4: You will hear: “please input HHMM”

--Input “20 08”

Note: the time must be 24 hours

5.2 Volume adjustment

Press “*#” to enter menu setting, follow the voice broadcast to operate:

1: You will hear: “1. Create user; 2. Delete user; 3. System setting”

--Press 3# key

2: You will hear: “1. Time setting; 2. Volume adjustment; 3. Verification mode;
4. Language setting; 5. Installation setting”.

--Press 2# key

5. 3 Unlock mode

A Verification mode

Press “*#” to enter menu setting, follow the voice broadcast to operate:

1: You will hear: “1. Create user; 2. Delete user; 3. System setting”

--Press 3#

2: You will hear: “1. Time setting; 2. Volume adjustment; 3. Verification mode;
4. Language setting; 5. Installation setting”.

--Press 3# key

3: You will hear: “1. Single verification unlocking; 2. Double verification
unlocking”

-- Set according to needs

5. 4 Language setting

Press “*#” to enter menu setting, follow the voice broadcast to operate:

1: You will hear: “1. Create user; 2. Delete user; 3. System setting”

-- Press 3#

2: You will hear: “1. Time setting; 2. Volume adjustment; 3. Verification mode;
4. Language setting; 5. Installation setting”.

--Press 4# key

3: You will hear: “1. Chinese; 2. English”

-- Set according to needs

6.Pick-proof setting

Press shortcut key 4# to enter menu setting, you will hear “please input administrator password”

1: You will hear: 1. Turn on pick-proof; 2. Turn off pick-proof.

--Set according to needs

7.Wechat Mini program

Step 1: open the Wechat

Step 2: scan the QR code



微信扫一扫，使用小程序

Step 3: please input administrator password

Step 4: please input valid time

Step 5: after the temporary password is generated, the password can be used to open the door within the valid time

Note: 1. The first set of administrator must be set to

passwords rather than fingerprints or cards

2. The time must be set to the same time as the mobile phone time, and the time must be set to 24 hours

Network operating instructions

Step 1: register administrator (for example, the registered administrator password is 123456789)

Step 2: input “1#” on the lock main panel, and you will hear “please input administrator

Step 3: input “123456789” for administrator authorization

Step 4: lock panel automatically enters the distribution state

Shortcut key description

1# enter the network distribution state, 2# delete the network distribution

3# or the doorbell, request remote unlock, 4# enter the pick-proof setting Settings

Register and log in APP

- Register APP: if you don't have APP account, you can choose to register or log in via verification code by message.
- Click "create new account", enter account register page, get message verification code and set password as prompted.
- If you have an account, click "log in" to enter the APP. It supports log-in via password, verification code and account.



Create family

- After registration and log-in, create family Each account can create or enter several families devices can be grouped by room in the home.
- It is suggested to set the functions that depend on the location of the home in advance such as the weather



Add WiFi door lock

At “my home” option of the APP, click the “+” at upper right corner, choose the WiFi door lock in the “security sensor”, enter the page as in Figure 2. Follow the instructions in the manual, after the device enters network distribution mode, follow the instructions of the APP



Figure 1

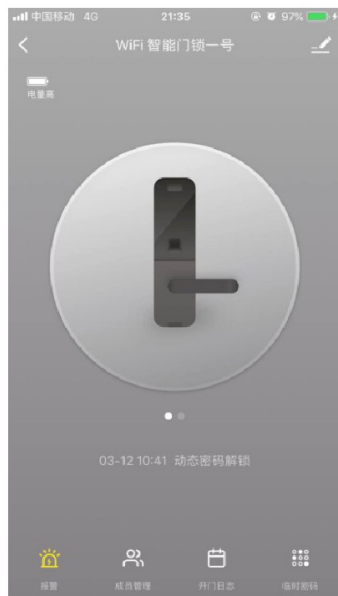


Figure 2

Panel first page

1、The main page includes remote unlock message member management door opening record temporary password and other functions

2、To open the door remotely, make a request on the door lock hardware, the app will respond whether to open the door/ reject the request



Dynamic password

Click to get dynamic password, and then quickly cope the password



Message cente

You can find alarm information, doorbell call information and hijacking alarm information in the message center



Member management

You can add, delete or change the member
In the member management, only the app administrator has the access



Unlock log

You can check the unlock logs, which are listed in reverse order. If the unlock IDs are associated with user names, the corresponding user names will be directly displayed. If the unlock IDs are not associated with user names specific unlock IDs will be displayed



Temporary password

You can create and delete the temporary password on app. After each creation and delete the lock hardware needs to be synchronized to the server. You can choose whether to send messages when creating the system, which supports both domestic and foreign messages (The owner of pid shall pre-charge the message fee)



Anti-hijacking icon

After opening the anti-hijacking icon as in the left picture, if the unlocking action of the unlocking ID occurs when the door is locked the system will report the record and the app will trigger the anti-hijacking alarm



Restore factory setting

Click the icon on the upper right corner of the main interface, then pull down and click on the “restore factory setting” . You can also restore factory setting on the hardware, please refer to the user manual



X2-3585 lock body
opening diagram
unit: mm
Scale: 1:1
Direction: text up

Door center line

Side of door

Arrow up

Lock slot: 180X19 深度: 55mm

2-φ3.3

R12.5

R19

R25

φ16

From ground 100cm

From ground
100cm